

Alphacount 5P

Partner Line Range



TECHNICAL SPECIFICATIONS:

- ❖ **Principles**
Electrical impedance, Colorimetry;
Laser scattering method
- ❖ **Parameters**
WBC, BAS#, BAS%, NEU#, NEU%, EOS#, EOS%,
LYM#, LYM%, MON#, MON%, RBC, HGB, HCT,
MCV, MCH, MCHC, RDW-CV, RDW-SD, PLT,
MPV, PDW, PCT, P-LCR, P-LCC;
ALY#, ALY%, LIC#, LIC%;
WBC Histogram, RBC Histogram, PL T Histogram;
2D DIFF Scatter gram x 3; 3D DIFF Scatter gram x 1;
- ❖ **Testing mode**
CBC, CBC+DIFF
- ❖ **Sample consumption**
Whole Blood: 15µl (CBC+DIFFICBC)
Pre-diluted 20µl(CBC+DIFFI CBC)
- ❖ **Reagents**
AC 5P Diluent, AC 5H Lyse , AC 5D Lyse
- ❖ **Throughput**
60 S/H



- ❖ **Optional external devices**
Bar-code reader, Mouse, Keyboard,
External printer
- ❖ **Sample types**
Whole Blood, Peripheral Whole Blood,
Pre-diluted blood
- ❖ **System**
Integrated windows system displayed by
10.4 inches color touch screen.
Bi-directional LIS communication
- ❖ **Link ports:** LAN; USB X1
- ❖ **Working Environment:** 10°C-30°C; humidity < 85%
- ❖ **Data storage:** 100000 results
- ❖ **Power:** 110V-240V; 50Hz/60Hz; 400VA
- ❖ **Printer:** Internal thermal printer
- ❖ **Size:** (mm) 365x 470x 525 Weight 31kg

Test	Linear range	Carry-over	CV (Whole blood)
WBC	0-500×10 ⁹ /L	≤ 0.5%	≤ 2.0%
RBC	0-8×10 ¹² /L	≤ 0.5%	≤ 1.5%
HGB	0-250g/L	≤ 0.5%	≤ 1.0%
PLT	0-5000×10 ⁹ /L	≤ 1.0%	≤ 4.0%



Alphacount 5P

5- Part Hematology Analyzer



Accuracy



Intelligence



Reliability



Economy

- ❖ The brand-new automated 5-part differential hematology analyzer
- ❖ Tri-angular laser scatter+ Flow cytometry for 5-part WBC counting
- ❖ Independent BASO counting channel
- ❖ Whole Blood, Peripheral Blood, Pre-diluted blood
- ❖ Throughput of 60 samples / hour
- ❖ 29 parameters (including 4 research parameters)



MEDSOURCE OZONE BIOMEDICALS PVT. LTD.

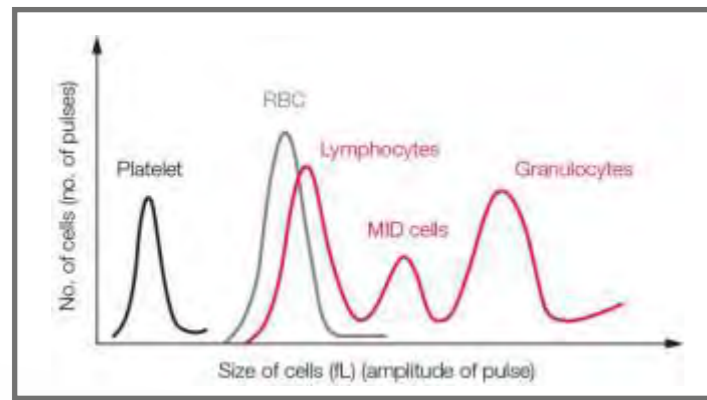
PLOT NO. 109, HSIIDC, SECTOR- 31, FARIDABAD, HARYANA (INDIA)-121003

+91-129-4286600 | mail@ozonebio.com | www.ozonebio.com

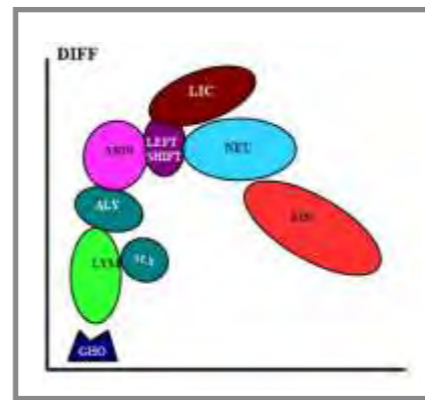


Upgrade to Automated 5 part Hematology Analyzer

- From 3 part histograms to 5 part scattergrams



Histograms



Scattergrams

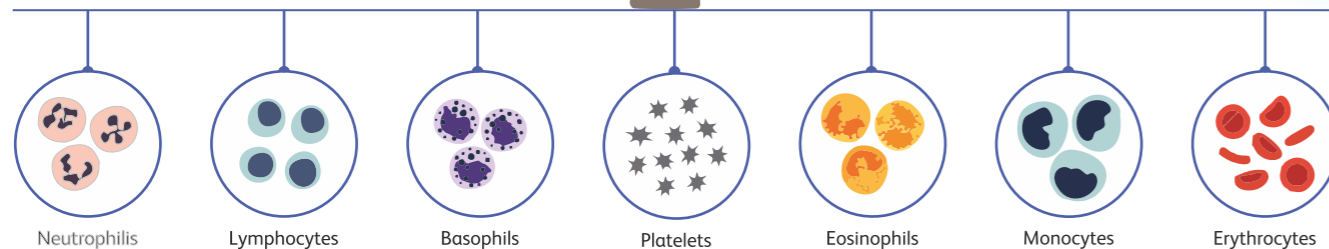
- From mid / granulocyte population to complete WBC differentiation

WBC			
3-part	Granulocytes	Monocytes / Mid-Cells	Lymphocytes
5-part	Neutrophils	Basophils	Monocytes
		Eosinophil	Lymphocytes

- From manual interpretation of flagged samples to improved accuracy with minimal manual intervention

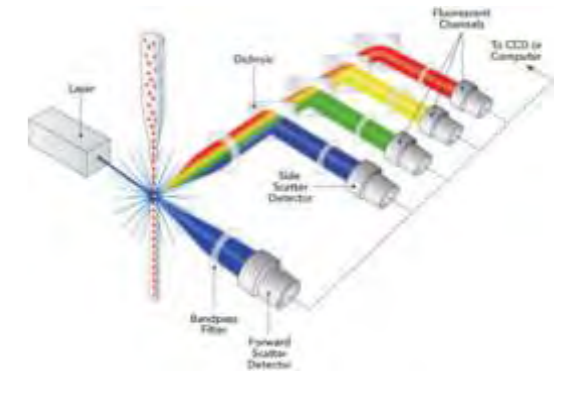
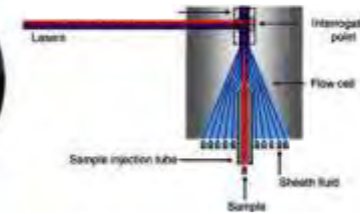
The most important aspect of automated hematology analyzers is the ability of the analyzer to detect and flag for abnormal samples. Workflow efficiencies can be gained by significantly reducing suspicious flagging and the number of manual differentials. The number of samples that require manual examination can be greatly reduced with more detailed information and improved accuracy provided by a 5-part differential analyzer.

Microscopic Hematology



Integrating best in class technologies in a compact entry level 5 part Hematology system

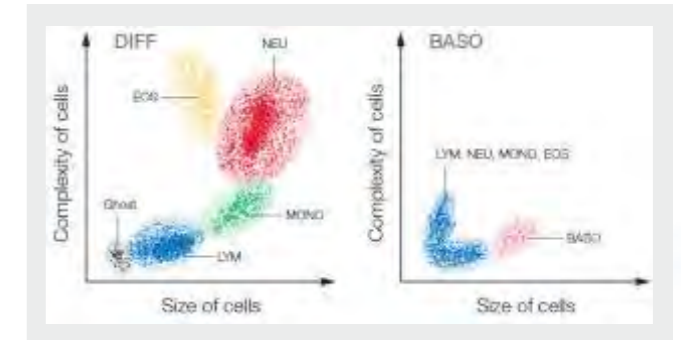
- Tri angle laser scatter flow cytometer with sheath fluid technology for accurate 5 part differentiation



- 29 parameters including research parameters Immature Granulocytes, Atypical Lymphocytes and PLCR/PLCC



3 Histograms +
2D Scattergrams +
3D Scattergram



Dedicated channel for basophils counting – Further improvement in accuracy

- Touch screen band software and powerful hardware with high quality components

- Components sourced from globally recognized top of line providers.
- Easy to use touch screen
- On-board printer

